



Thoughts from Todd

What is your "Worldview?" How do you see the world? It's an interesting question that I haven't given much thought to until recently. Three things have me asking this question. First, I am reading a fantastic book by Kenneth Bailey called, "Jesus through Middle Eastern Eyes." Bailey lived in the Middle East for much of his life in order to study their culture and customs. His insights on that culture have brought new light to Jesus' teaching and parables. I'm learning things I've never considered because of Bailey's careful and thoughtful scholarship. Second, during Bible school we watched a video of two children living in an African village. The video highlighted their difficult living conditions, including having to walk about a mile every morning to retrieve fresh water from a well. The video did a great job of showing the many challenges they face just to accomplish basic tasks you and I take for granted. Finally, this idea of "Worldview" has come into sharp focus as I've gotten to know Pastor Benjamin Yeanay and his wife Miatta. John Sawyer, the Executive Director of the Middle District Baptist Association, introduced me to Pastor Benjamin. Benjamin pastors Bethel Baptist Church in Liberia and I got to know him over lunch one day. The challenges in their church family are many and much of their mission efforts are concentrated on helping people survive. Liberia is still recovering from the devastation of a civil war. Pastor Benjamin personally knows families that were killed. He told me stories of widespread hunger and lack of education. Miatta told similar stories when she visited our WMU in August. She said their WMU fixes breakfast every Sunday for over 100 children. She said many families subsist on rice alone. Can you imagine eating rice, and only rice, for your daily sustenance?



Pastor Benjamin and Miatta Yeanay

I'm grateful for these three experiences because they remind me that God's Kingdom is so much bigger than my usual narrow focus. My focus and thinking is usually confined to whatever is happening within the borders of Chesterfield and Powhatan. It's both natural and comfortable for our focus to remain local, but God's Kingdom is, of course, global. Think of the Bible's most famous verse, John 3:16, "For God so loved the world that he gave his one and only Son, that whoever believes in him shall not perish but have eternal life." This Scripture, Bailey's book, that Bible school video and the Yeanays' visit have reminded me that God's focus is, of course, global. There are God's children who need food, clothing and education. I believe God has allowed us the privilege of meeting the Yeanays so that we might be a blessing to them, as they have been a blessing to us by their visit. During their visit, they provided our WMU with several ways we can minister to Bethel Baptist Church in Liberia.

While specific plans are still being worked out, we'll soon announce mission opportunities for this potentially life-saving work. I'm deeply grateful to our WMU for leading us in this effort to share God's love with our brothers and sisters in Liberia.

Lastly, these experiences that I have shared have caused me to examine my own worldview. Am I open to seeing the world through others' eyes, or do I cling to the comfort of my own perspective? As we move forward, let's pray for hearts that are both curious and compassionate, ready to embrace the fullness of God's Kingdom. May God bless Pastor Benjamin and Miatta Yeanay. May God bless Bethel Baptist Church – Liberia. May God bless Bethel Baptist Church – Midlothian and may God bless you and your family. With love, peace and grace...

A Word from Jeremy

It's that time of year! Our Youth and Children are back to school for the 2025-2026 school year. This time is often met with sadness that summer is over, and some nerves about a new year, especially if someone is entering a new school for the first time. A new school year is also a new opportunity to learn and grow. Whether you are a student, parent, grandparent or a teacher, this time is a time for us to really trust in God's guidance.

I also want to remind everyone that education isn't just about dates, numbers, and names. Education is an opportunity to grow in understanding and compassion. Take this year to do three new things! Try something new, be kind to everyone you see, and stay curious. As a church family, let's cover these students and teachers in all the prayer we can! May this year be filled with new friendships, fresh learning, and the confidence that God is with us in every step — from the first-day excitement to the last-day celebrations.



Pastor Todd to Speak at Fitzgerald Memorial Baptist Church

Fitzgerald Memorial Baptist Church, where Pastor Todd previously served, has invited him to speak at their homecoming service on September 14. Todd is delighted to worship with them again and to reconnect with the wonderful folks of Fitzgerald. That same Sunday, Bethel will be blessed to welcome Rabbi Derek Blumenthal from Chosen People Ministries, who will preach on "The Gospel in the Fall Feasts." In Judaism, Jesus participated in several significant "Fall Feasts." Derek will explore what these feasts were and why they remain meaningful for us as believers in Christ today. Todd is confident his message will inspire and enrich you!

Welcome Back Bethel Preschool Teachers!



Have a great school year!

Ladies Coffee Club



The Ladies Coffee Club starts again on **Thursday, September 4th at 6 PM and will run for 9 weeks.** The group will be exploring "Emotionally Healthy Spirituality" by Peter Scazzero. The cost to join is \$12 per person and includes the book.

Please contact Heather DeShetler to sign up or sign up on the sheet on the round table at the entry to the People of Hope Center.

You do not need to be a Bethel member to participate, so please invite anyone you think would enjoy or benefit from the session/group. If you know someone that would like to join, and cost is an issue, please reach out to Heather.

Hope for Appalachia-Bags for Kindergartners

WMU is working with Hope for Appalachia to provide bags filled with supplies for kindergartners. Simply pick up a bag in the People of Hope Center and purchase the items listed on the tag. Return your filled bag back to the People of Hope Center by **September 30**. If you have questions please see Pat Reynolds.



Men's Fellowship Lunch is September 4

The next Men's Fellowship Lunch will be **Thursday, September 4, at noon** at the Italian Delight Restaurant in Powhatan. If you have any questions please contact Bruce Lewis at 804-467-2886. All men are welcome.



October Newsletter Deadline is September 10

The deadline for the October Newsletter is **September 10**. All articles, thank you notes, ministry information and other items should be dropped off in the church office or emailed to karnold@bbc1817.org before September 10. Thank you for your help!



Ladies Fellowship Lunch

The September Ladies Fellowship Lunch will be on **Thursday, September 25** at noon at the Four Seasons Restaurant in Midlothian. All women are invited. If you would like more information about the Ladies Fellowship Lunch, or you plan to attend, please call Shirley Lewis at 804-467-2885 so she can reserve a place for you.



September WMU - New Date

Bethel's WMU group has moved their September meeting to **Monday, September 8 at 10:00 AM** due to the Labor Day holiday. The group meets in the People of Hope Center. For questions, please contact Janet Goodman at goodman42@aol.com.



Notary Available at Bethel

Bethel is pleased to offer free notary services to all Bethel members. To make an appointment to have a document notarized, please contact Kim Arnold at 804-794-8590 or by email at karnold@bbc1817.org.



Life Line Screening

Bethel will host Life Line Screening on **Friday, October 10**. Visit <https://www.lifelinescreening.com/> for more information.



Charlotte's Pantry - September Schedule

- Wednesday, September 10, 5 to 6:30 PM - Distribution
- Friday, September 26, 9 to 11 AM - Distribution

How to Help - Charlotte's Pantry is currently accepting donations of the following items:

- Non-Perishable, Unexpired Food Items
- Toiletries such as Hand Lotion, Shampoo and Tooth Paste

Celebrating Our September Birthdays!



September 1-Noah Moseley
September 3-Rodney Smith
September 5-Janet Goodman
September 9-Susan Brown
September 9-Bernard Curlee
September 9-Mary Camden
September 10-Tom Kenney
September 11-Rachel McClellan
September 11-Brian Hardy
September 12-Greg McLeod
September 14-Charles Martin
September 14-Ellen Moseley

September 14-Linda Redmond
September 16-Heath Humphreys
September 16-Heather DeShetler
September 17-David Ellis
September 17-Elliemae Mead
September 19-Paul Kiiffner
September 20-Martha Vaughan
September 21-Gayle Rogers
September 23-Bill Carlson
September 24-Gray Bradbury
September 28-Jim Brock
September 28-Cheryl Grubbs



Wednesday Night's in September

Wednesday, September 3-Dinner at 6 PM and Ministry & Missions Meeting at 7 PM

Wednesday, September 10-Choir Practice at 5:30 PM, Youth Group at 6:00 PM, Sacred Circle at 6:30 PM

Wednesday, September 17-Choir Practice at 5:30 PM, Youth Group at 6:00 PM, Sacred Circle at 6:30 PM

Wednesday, September 24-Choir Practice at 5:30 PM, Youth Group at 6:00 PM, Sacred Circle at 6:30 PM



Dr. Mary Dance Berry

Congratulations to Dr. Mary Dance Berry who recently completed her PhD from Duke University. She is the daughter of Sissy and Sherwood Dance and previously attended Bethel Baptist Church. Dr. Berry teaches courses on biblical literature and Biblical Hebrew as well as the practice of teaching the Bible. She is a candidate for ordination, certified ready to receive a call, in the Presbyterian Church (USA). Mary and her husband have two children and live in Hillsborough, North Carolina.

Building Safety

As we begin a new preschool year at Bethel, keeping our children safe is our top priority. If you're visiting during school hours, please help us by remembering:

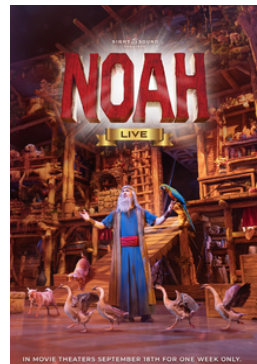
- Not to prop open exterior doors, and to be sure doors close and latch securely behind you.
- Stop by the Church Office to check in so we know you're on-site.
- If you notice anything that needs repair, kindly let the Church Office know.

Thank you for helping us keep Bethel a safe and welcoming place for our little ones!

Movie Outing

You are invited to join us for a movie outing on September 21! The afternoon begins at 1:30 PM in the People of Hope Center for a study/discussion.

The movie, Noah Live, begins at 3:00 PM at Regal Theater in West Chester Commons. Tickets are \$18 per person. Please register by September 10.





Dear Bethel Family,
Thanks so very, very much for all of your prayers,
calls, visits, meals and goodie baskets. I am so
blessed to have such a kind, loving Bethel family.
Love and blessings to all,

Joyce Bullock

Dear Members of Bethel Baptist Church,
I have never seen so many “goodies” in one
basket!!! Chocolate is always a winner in the
Jenkins’ household. Many thanks for thinking of me
and I will look forward to coming back to church
soon.

Much love,
Aleta Jenkins



News From the Preschool

We are so excited for all the good that September will bring to our preschool-a fresh start, a new season, and a fun and exciting school year. After working throughout the summer, our teachers are ready to fill the minds and hearts of our young students with a year of fun, learning, and faith. The classrooms, hallways, and playground will be bustling this year as we welcome 43 students to our preschool! We are overjoyed to share our amazing little preschool with so many children and families.

We are thrilled to welcome back our teachers, and we are confident our classroom teams will work together beautifully. While we are certainly going to miss Ms. Glenda Fisher this year, we are beyond excited for her to be present with her two granddaughters and family as she embarks on her retirement. It is my pleasure to introduce our newest lead PreK teacher, Ms. Dawn Nugent. Dawn comes to us with years of preschool teaching experience and has been an amazing Bethel Preschool parent for the last four years. She will be working with Ms. Kat Levermore who is returning for her fifth year with us. Our second PreK class will be led again by Ms. Stephanie Zahringer and Ms. Jen Shearin. Ms. Heather Byrne is our lead 3's teacher this year with Ms. Nadine Cosgrove and Ms. Anne Allen as assistants. Ms. Alexis Hammer will be leading our 2's class. And our littlest learners, the Parents Morning Out toddler class, will have myself and Ms. Alexis as their teachers. A huge WELCOME BACK to all of teachers! We are blessed to have all these intelligent, fun, godly women in our preschool. Our students are so lucky to start their learning journey with these teachers.

I want to, once again, give an open invitation to all church members to come and see how God is working in our preschool. Our students would love to have guest readers in their classes, learn more about the word of the Lord, or see any special talents you may be willing to share. This preschool is a such a special place, and the children will brighten even the darkest of days.

Please keep the preschool in your prayers. Specifically, please pray that we have a healthy school year. Pray that we can serve each of the 43 children that have been placed with us this year. Pray for our amazing teachers- they work tirelessly and do such an incredible job... I am so proud to have the opportunity to work with them. And pray that our children come to know the love of the Lord through this school. As always, I am so thankful for your support and encouragement.

God bless,
Heather Kerns, Bethel Baptist Preschool Director

A big thank you to the Bethel Care Team. It was nice of you to stop by and see me. I thoroughly enjoyed the visit.

Love,
Marie Justis

The Care Team appreciates the beautiful blankets from the church. We are looking forward to delivering them this fall to our homebound friends. Whether through visitations, prayer or gifts, the Care Team works to keep our members connected.

Jane, Bethel Care Team Lead

Friends,
We appreciate your kindness in providing a meal for the clinic workers. The fried chicken, salads and pie were wonderful!

Powhatan Free Clinic

Church Email Addresses

Todd Bradbury, Pastor:

tbradbury@bbc1817.org

Jeremy Meads, Family Life Minister:

jmeads@bbc1817.org

Kim Arnold, Administrative Assistant:

karnold@bbc1817.org

Church Office (this forwards to Kim):

office@bbc1817.org

Stephanie Blanton, Worship Leader:

sblanton@bbc1817.org

Heather Kerns, Preschool Director:

hkerns@bbc1817.org

Bruce Moseley, Technical Support:

webmaster@bbc1817.org

Ministry & Missions Meeting

Join us for our quarterly Ministry & Missions Meeting on **Wednesday, September 3 at 7:00 PM** in the People of Hope Center. We'll begin with communion and offer a Zoom option for those attending virtually.

A Community Meal will be served at 6:00 PM. Please sign up on the sheet on the round table in the People of Hope Center or by calling the church office at 804-794-8590.

The Book of Reports and Zoom link will be sent electronically before the meeting. Printed reports will also be available in the People of Hope Center ahead of time and on the night of the meeting.



News from the Parish Nurse

Just about everyone feels pain from time to time. When you cut your finger or pull a muscle, pain is your body's way of telling you something is wrong. Acute pain usually comes on suddenly and lasts for a limited time. Chronic pain is different. Your body keeps hurting weeks, months, or even years after the injury. Doctors often define chronic pain as any pain that lasts for 3 to 6 months or more. Below are links for additional information on types of pain:

- Pain Classifications (<https://www.webmd.com/pain-management/pain-types-and-classifications>)
- Chronic Pain (<https://www.webmd.com/pain-management/understanding-pain-management-chronic-pain>)
- Nerve Pain (<https://www.webmd.com/pain-management/neuropathic-pain>)
- Psychogenic Pain (<https://www.webmd.com/pain-management/pain-management-psychogenic-pain>)
- Musculoskeletal Pain (<https://www.webmd.com/pain-management/musculoskeletal-pain>)
- Chronic Muscle Pain (<https://www.webmd.com/pain-management/myofascial-pain-syndrome>)
- Abdominal Pain (<https://www.webmd.com/pain-management/abdominal-pain-causes-treatments>)
- Joint Pain (<https://www.webmd.com/pain-management/joint-pain>)
- Central Pain Syndrome (<https://www.webmd.com/pain-management/central-pain-syndrome>)
- Complex Regional Pain Syndrome (CRPS) (<https://www.webmd.com/pain-management/complex-regional-pain-syndrome>)
- Trigeminal Neuralgia (<https://www.webmd.com/pain-management/trigeminal-neuralgia>)
- WebMD Pain Management Center - Find pain management information and the latest news on chronic pain (<https://www.webmd.com/pain-management/default.htm>)

Pain can interfere with daily activities, social commitments, even your mental health. Some patients may feel anxious and frustrated with the changes in their lifestyle and pain management. Find a compassionate doctor who will listen to your concerns and start a plan of care with follow up care.

Also remember, September starts the preparation for flu season. Vaccines are available at local pharmacies and most Primary Care Doctors.

"Not only that, but we rejoice in our sufferings, knowing that suffering produces endurance, and endurance produces character, and character produces hope, and hope does not put us to shame, because God's love has been poured into our hearts through the Holy Spirit who has been given to us." **Romans 5:3-5 ESV**

Blessings,
Cindy Luck RN FCN

SEPTEMBER 2025

SUNDAY	MONDAY	TUESDAY	WEDNESDAY	THURSDAY	FRIDAY	SATURDAY
	1  <p>HAPPY LABOR DAY</p> <p>Church Office and Preschool Closed</p>	2 <ul style="list-style-type: none"> • Boy Scouts, 7 PM, POHC 	3 <ul style="list-style-type: none"> • Ministry & Missions Meeting, POHC -6 PM Dinner -7 PM Meeting 	4 <ul style="list-style-type: none"> • Men's Fellowship Lunch, Noon, Italian Delight • AA Meeting, 5:30 PM, Providers Room • Circle of Truth Rehearsal, 5:30 PM • Ladies Coffee Club, 6 PM, TBD 	5	6 <p>Playground Boy Scout Eagle Scout Project</p>
7 <p>Communion Sunday</p>  <ul style="list-style-type: none"> • Sunday School, 9:30 AM • Worship, 10:30 AM, POHC • Girl Scouts, 5 PM, Downstairs 	8 <ul style="list-style-type: none"> • ESL, 8:30 AM Downstairs • Sharing and Caring, 9 AM, Endeavors Room • WMU, 10 AM, POHC 	9 <p>Todd Out</p>	10 <p>Todd Out</p>	11 <p>Todd Out</p>	12 <p>Todd Out</p>	13 <p>Todd Out</p>
14 <p>Todd Preaching at Fitzgerald</p> <ul style="list-style-type: none"> • Sunday School, 9:30 AM • Worship, 10:30 AM, POHC, Fall Feast of Israel with Rabbi Derek Blumenthal • Girl Scouts, 5PM, Downstairs 	15 <ul style="list-style-type: none"> • ESL, 8:30 AM Downstairs • Sharing and Caring, 9 AM, Endeavors Room 	16 <ul style="list-style-type: none"> • Boy Scouts, 7 PM, POHC 	17 <ul style="list-style-type: none"> • Choir Practice, 5:30 PM • Youth Group, 6 PM, Youth Suite • Sacred Circle, 6:30 PM, POHC 	18 <ul style="list-style-type: none"> • AA Meeting, 5:30 PM, Providers Room • Circle of Truth Rehearsal, 5:30 PM • Ladies Coffee Club, 6 PM, TBD 	19	20
21 <ul style="list-style-type: none"> • Sunday School, 9:30 AM • Worship, 10:30 AM, POHC • Movie Outing- Noah Live, 1:30PM, POHC, 3:00PM Movie at Regal Theater • Girl Scouts, 5PM, 	22  <p>WELCOME autumn</p> <ul style="list-style-type: none"> • ESL, 8:30 AM Downstairs • Sharing and Caring, 9 AM, Endeavors Room 	23 <ul style="list-style-type: none"> • Boy Scouts, 7 PM, POHC 	24 <ul style="list-style-type: none"> • Choir Practice, 5:30 PM • Youth Group, 6 PM, Youth Suite • Sacred Circle, 6:30 PM, POHC 	25 <ul style="list-style-type: none"> • Ladies Fellowship Lunch, Noon, Four Seasons Restaurant • AA Meeting, 5:30 PM, Providers Room • Ladies Coffee Club, 6 PM, TBD 	26 <ul style="list-style-type: none"> • Charlotte's Pantry, 9 - 11 AM 	27
28 <ul style="list-style-type: none"> • Sunday School, 9:30 AM • Worship, 10:30 AM, POHC • New/Potential Member Lunch After Worship • Girl Scouts, 5PM, Downstairs 	29 <ul style="list-style-type: none"> • ESL, 8:30 AM Downstairs • Sharing and Caring, 9 AM, Endeavors Room • Deacons' Meeting, 6 PM, Bruce Moseley's Home 	30 <ul style="list-style-type: none"> • Boy Scouts, 7 PM, POHC • WMU Kindergarten Bags Due 				



1100 HUGUENOT SPRINGS ROAD
MIDLOTHIAN, VA 23113

WORSHIP TIMES

9:30 AM SUNDAY SCHOOL | 10:30 AM WORSHIP



Wellcome
autumn